

MALDIVES LAND AND SURVEY AUTHORITY

MINISTRY OF HOUSING AND INFRASTRUCTURE

Office (PABX): +(960) 3004300, Fax: +(960) 3004254

Ameenee Magu, Maafannu, Male', 20392, Maldives.

Email: survey@housing.gov.mv

Web: www.surveyofmaldives.gov.mv,



CONTROL POINT DETAILS	Station Number PSM 0089
Coordinate Information	
Geodetic	Grid
WGS 84	UTM Zone 43
Lat: 004° 11' 09.18652"	E: 327665.414
Long: 073° 26' 50.45024"	N: 462844.807
Ellp Height: -90.510	Orth Height: 1.293
Island Name: K. Thilafshi	Date: 01-October-2013

Monument description & method of survey:

- Stainless steel plate fixed to concrete by two bolts.
- Monument labelled with s/s plate stating the point ID.
- Horizontal coordinates fixed by GNSS Static Survey.
- Elevation reduced relative to Local MSL by double level run.

General site condition & access:

- Easily accessible area with wide angle of sky visibility.
- Located in T-Jetty

Owner: Thilafushi Corporation Limited

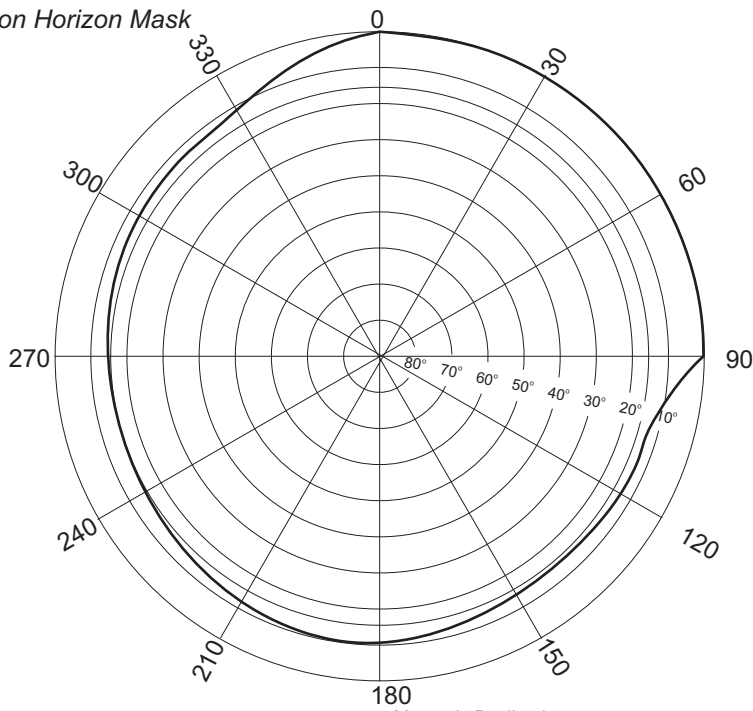


SITE INFORMATION

Station Number

P	S	M	0	0	8	9
---	---	---	---	---	---	---

Station Horizon Mask

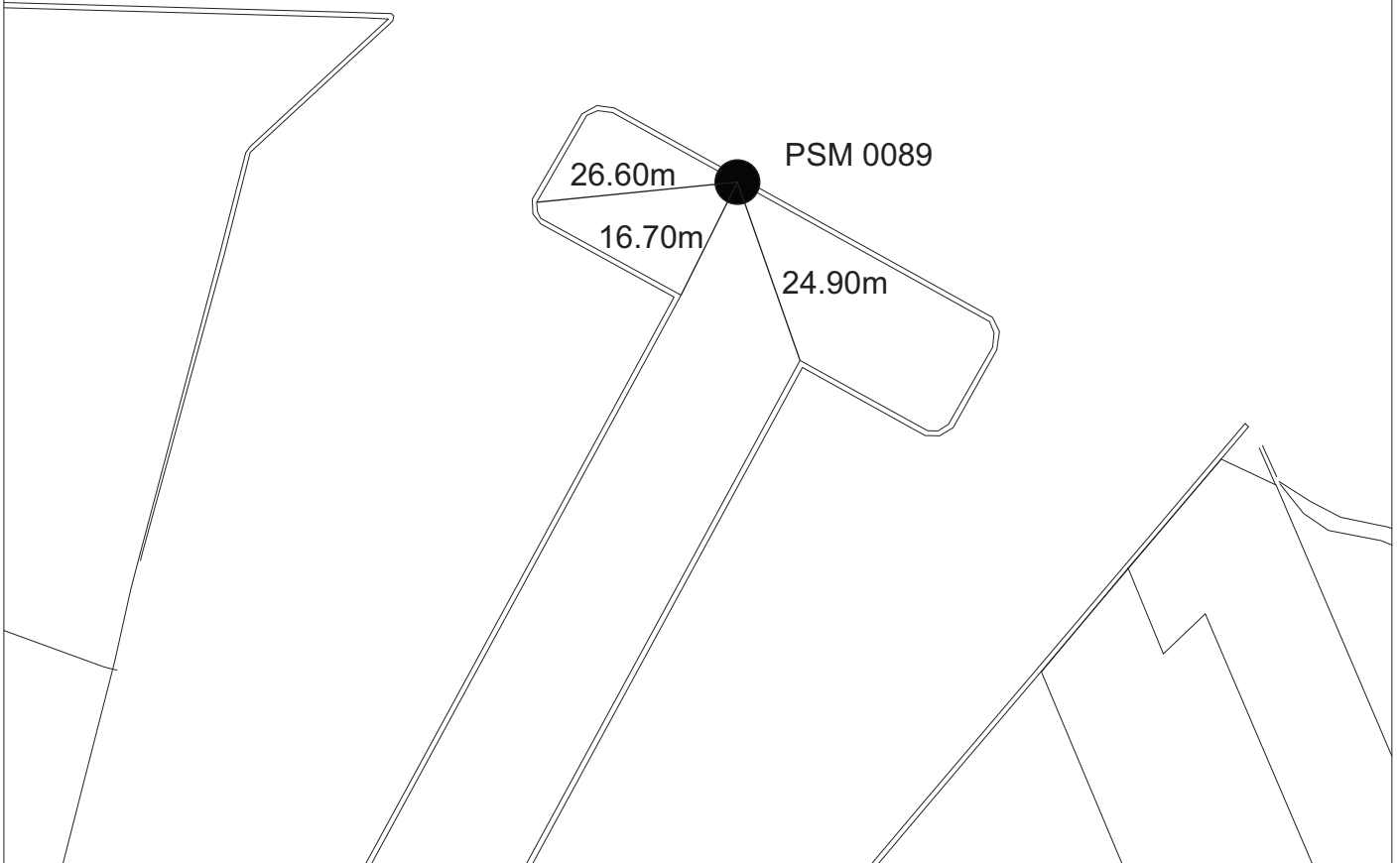


Height above Marker that horizon was mapped from 1.5 m

Magnetic Declination _____
 Declination applied to this figure?
 Yes No



Locality



Sketched by: MTCC Survey Team

Scale: Not to scale

Date: 01/October/2013

MALDIVES LAND AND SURVEY AUTHORITY

MINISTRY OF HOUSING AND INFRASTRUCTURE

Office (PABX): +(960) 3004300, Fax: +(960) 3004254

Ameenee Magu, Maafannu, Male', 20392, Maldives.

Email: survey@housing.gov.mv

Web: www.surveyofmaldives.gov.mv,



CONTROL POINT DETAILS	Station Number PSM 0090
Coordinate Information	
Geodetic	Grid
WGS 84	UTM Zone 43
Lat: 004° 10' 53.60264"	E: 327873.960
Long: 073° 26' 57.24329"	N: 462365.724
Ellp Height: -91.101	Orth Height: 0.712
Island Name: K. Thilafshi	Date: 01-October-2013

Monument description & method of survey:

- Stainless steel plate fixed to concrete by two bolts.
- Monument labelled with s/s plate stating the point ID.
- Horizontal coordinates fixed by GNSS Static Survey.
- Elevation reduced relative to Local MSL by double level run.

General site condition & access:

- Easily accessible area with wide angle of sky visibility.

Owner: Thilafushi Corporation Limited

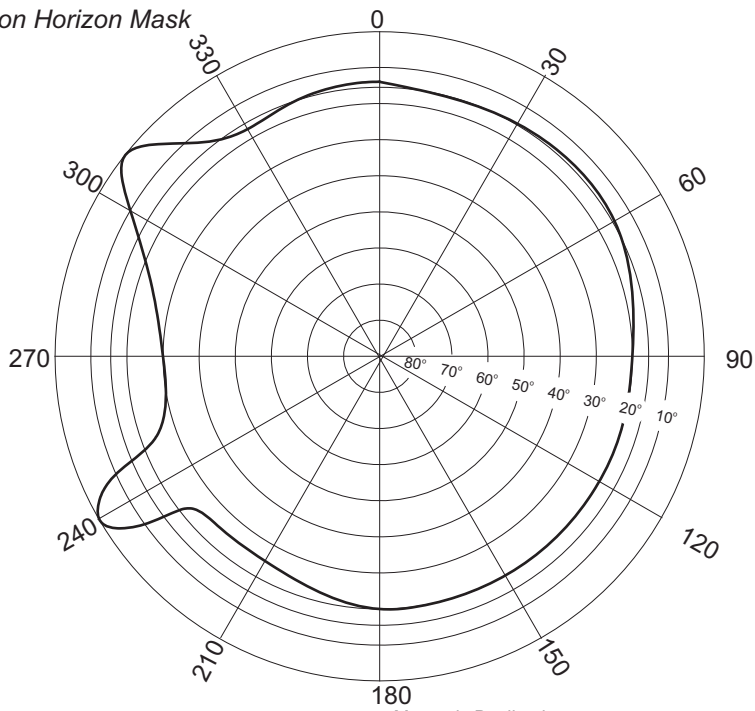


SITE INFORMATION

Station Number

P	S	M	0	0	9	0
---	---	---	---	---	---	---

Station Horizon Mask

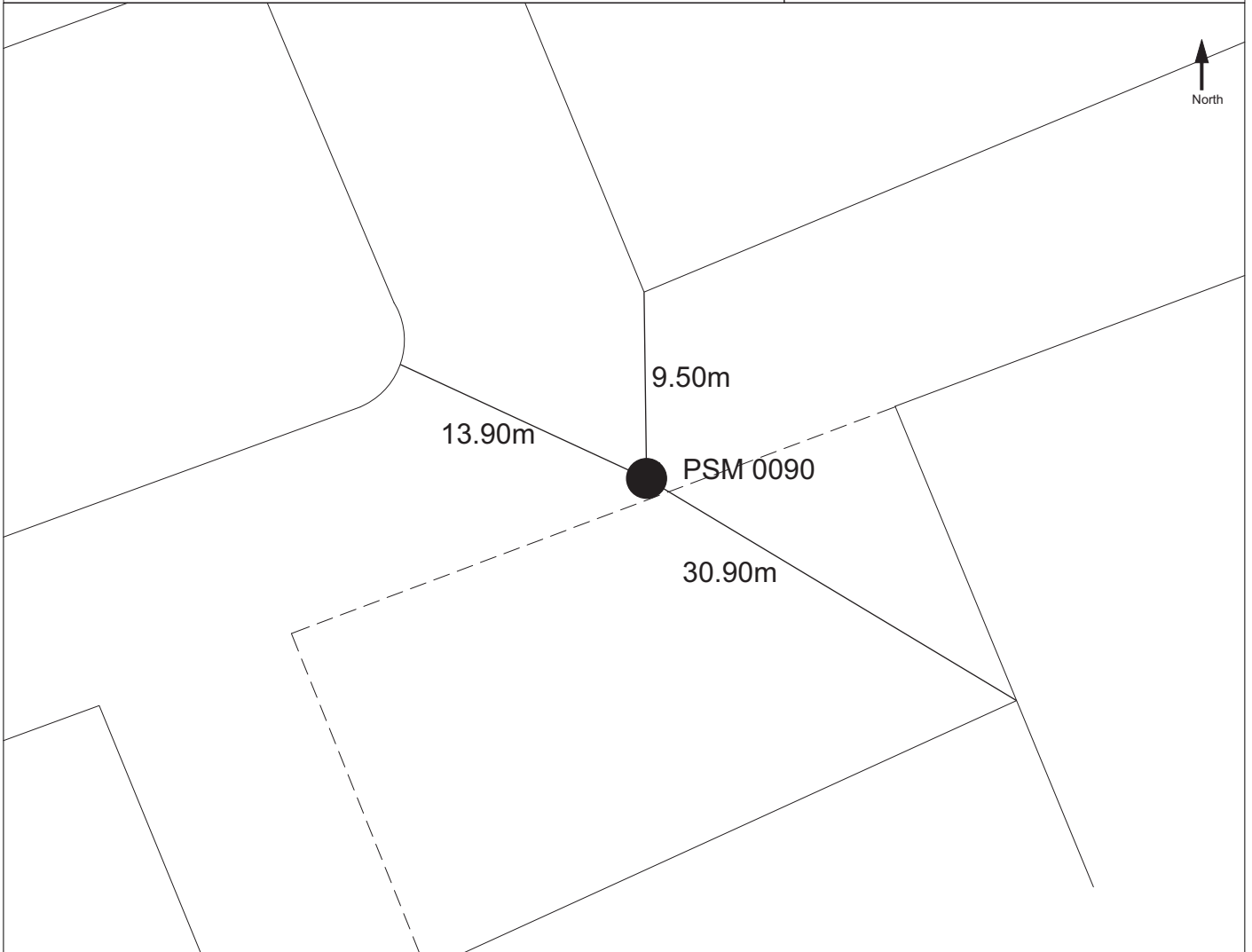


Locality



Height above Marker that horizon was mapped from 1.5 m

Magnetic Declination
Declination applied to this figure?
 Yes No



Sketched by: MTCC Survey Team

Scale: Not to scale

Date: 01/October/2013

MALDIVES LAND AND SURVEY AUTHORITY

MINISTRY OF HOUSING AND INFRASTRUCTURE

Office (PABX): +(960) 3004300, Fax: +(960) 3004254

Ameenee Magu, Maafannu, Male', 20392, Maldives.

Email: survey@housing.gov.mv

Web: www.surveyofmaldives.gov.mv,



CONTROL POINT DETAILS	Station Number PSM 0091
Coordinate Information	
Geodetic	Grid
WGS 84	UTM Zone 43
Lat: 004° 10' 57.62191"	E: 326016.292
Long: 073° 25' 56.99837"	N: 462492.867
Ellp Height: -90.233	Orth Height: 1.589
Island Name: K. Thilafshi	Date: 01-October-2013

Monument description & method of survey:

- Iron rod fixed in concrete.
- Monument labelled with s/s plate stating the point ID.
- Horizontal coordinates fixed by GNSS Static Survey.
- Elevation reduced relative to Local MSL by GNSS RTK surveying.

General site condition & access:

- Easily accessible area with wide angle of sky visibility.
- Located in Thilafushi TIZ

Owner: Thilafushi Corporation Limited

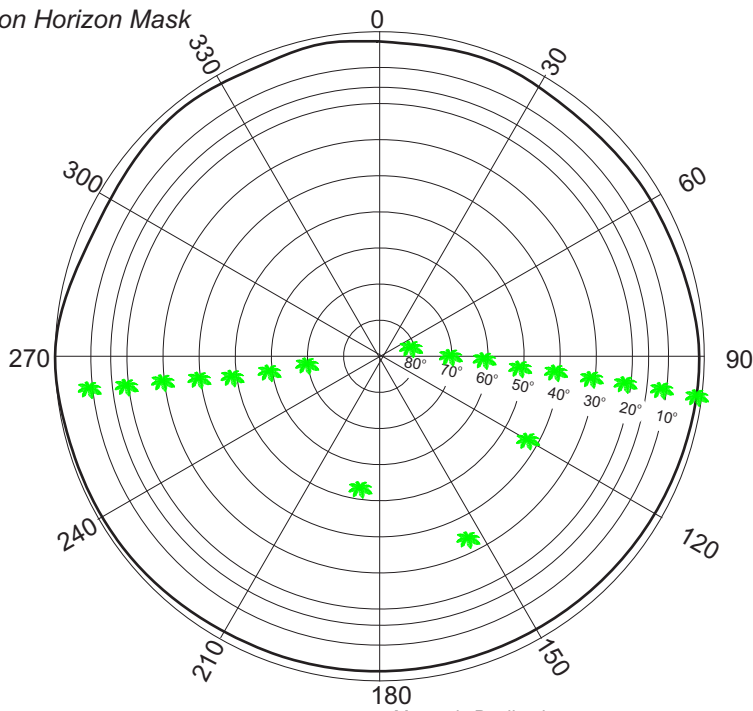


SITE INFORMATION

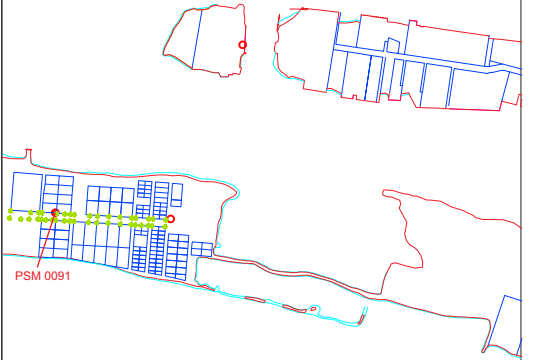
Station Number

P	S	M	0	0	9	1
---	---	---	---	---	---	---

Station Horizon Mask

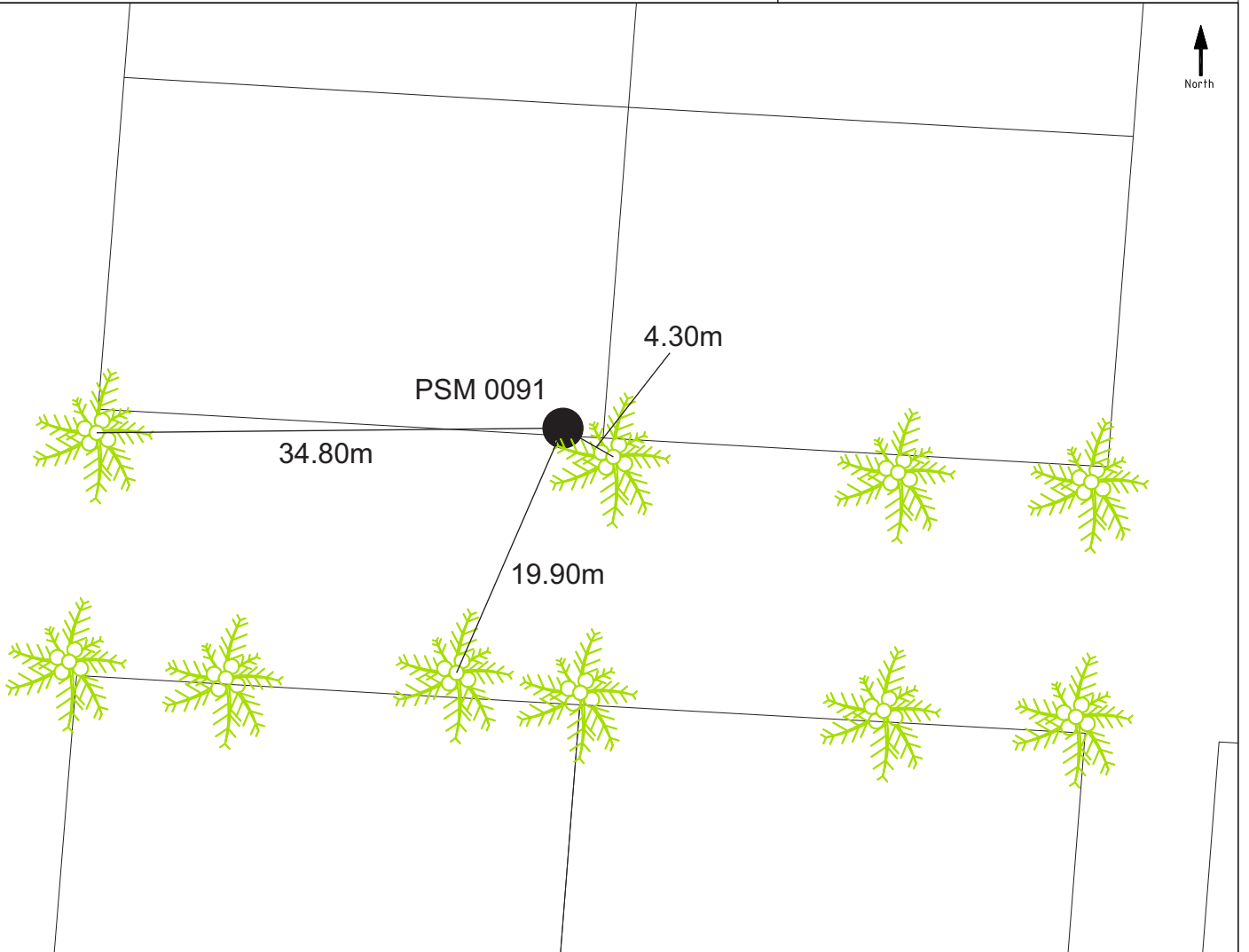
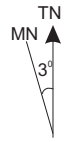


Locality



Height above Marker that horizon was mapped from 1.5 m

Magnetic Declination -----
 Declination applied to this figure?
 Yes No



Sketched by: MTCC Survey Team

Scale: Not to scale

Date: 01/October/2013

MALDIVES LAND AND SURVEY AUTHORITY

MINISTRY OF HOUSING AND INFRASTRUCTURE

Office (PABX): +(960) 3004300, Fax: +(960) 3004254

Ameenee Magu, Maafannu, Male', 20392, Maldives.

Email: survey@housing.gov.mv

Web: www. surveyofmaldives.gov.mv,



CONTROL POINT DETAILS	Station Number PSM 0092
Coordinate Information	
Geodetic	Grid
WGS 84	UTM Zone 43
Lat: 004° 11' 12.10576"	E: 326511.983
Long: 073° 26' 13.04294"	N: 462936.764
Ellp Height: -90.681	Orth Height: 1.141
Island Name: K. Thilafshi	Date: 01-October-2013

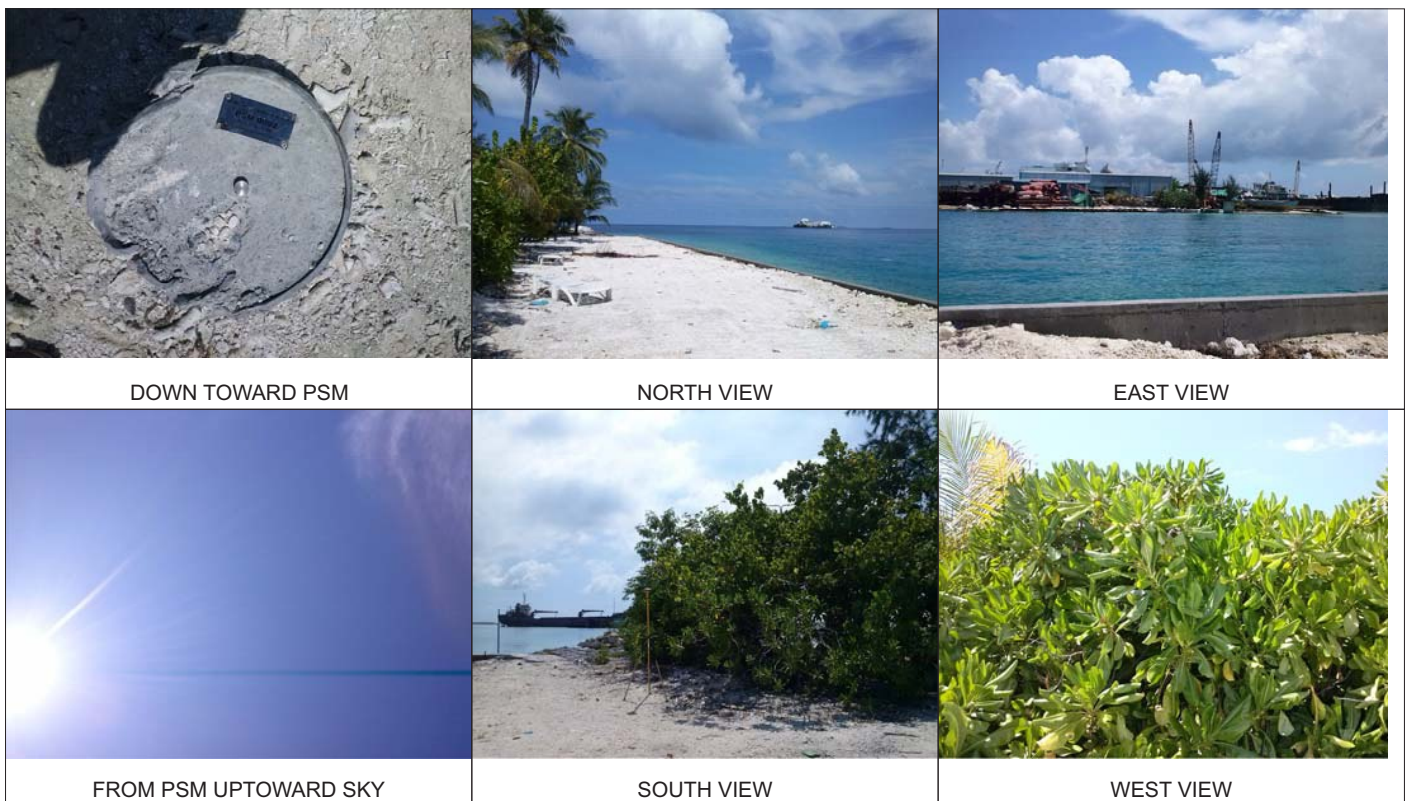
Monument description & method of survey:

- Type A Monument. Concrete casted insitu to a 1ft pvc pipe length 1m buried and 1.5m s/s rod driven to ground as the centre mark.
- Monument labelled with s/s plate stating the point ID.
- Horizontal coordinates fixed by GNSS Static Survey.
- Elevation reduced relative to Local MSL by GNSS RTK surveying.

General site condition & access:

- Easily accessible area with good angle of sky visibility.
- Located near Jetty of Thilafushi 3

Owner: Thilafushi Corporation Limited



DOWN TOWARD PSM

NORTH VIEW

EAST VIEW

FROM PSM UPTOWARD SKY

SOUTH VIEW

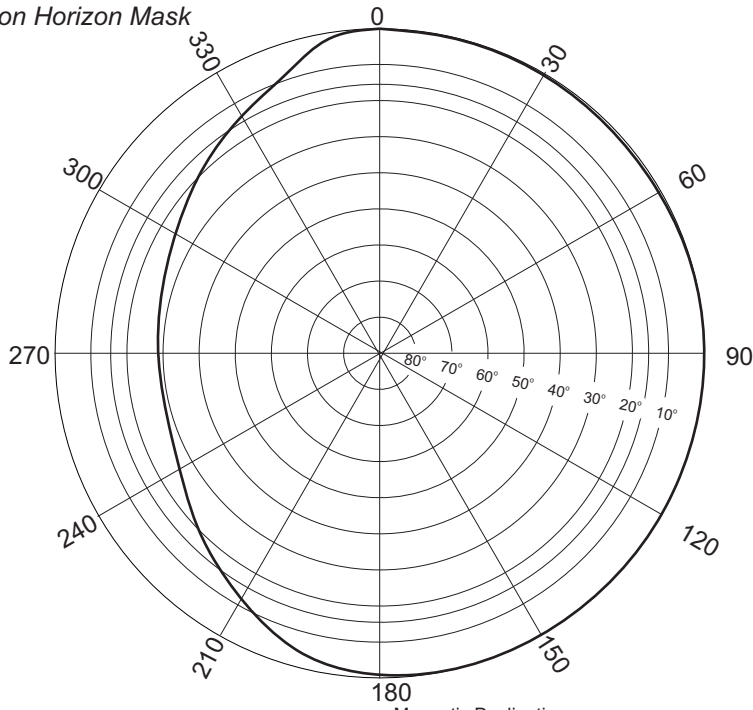
WEST VIEW

SITE INFORMATION

Station Number

P	S	M	0	0	9	2
---	---	---	---	---	---	---

Station Horizon Mask

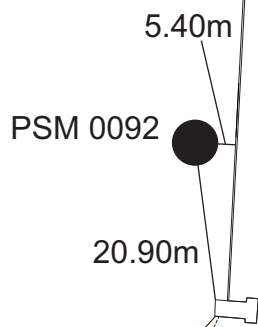
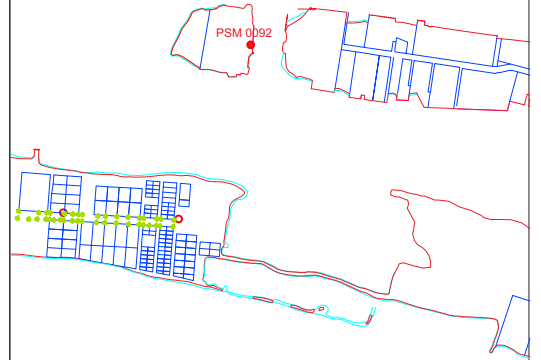


Height above Marker that horizon was mapped from 1.5 m

Magnetic Declination -----
 Declination applied to this figure?
 Yes No



Locality



Sketched by: MTCC Survey Team

Scale: Not to scale

Date: 01/October/2013

MALDIVES LAND AND SURVEY AUTHORITY

MINISTRY OF HOUSING AND INFRASTRUCTURE

Office (PABX): +(960) 3004300, Fax: +(960) 3004254

Ameenee Magu, Maafannu, Male', 20392, Maldives.

Email: survey@housing.gov.mv

Web: www.surveyofmaldives.gov.mv,



CONTROL POINT DETAILS	Station Number PSM 0093
Coordinate Information	
Geodetic	Grid
WGS 84	UTM Zone 43
Lat: 004° 11' 04.71108"	E: 327548.431
Long: 073° 26' 46.66573"	N: 462707.572
Ellp Height: -91.095	Orth Height: 0.713
Island Name: K. Thilafshi	Date: 01-October-2013







Monument description & method of survey:

- Type A Monument. Concrete casted insitu to a 1ft pvc pipe length 1m buried and 1.5m s/s rod driven to ground as the centre mark.
- Monument labelled with s/s plate stating the point ID.
- Horizontal coordinates fixed by GNSS Static Survey.
- Elevation reduced relative to Local MSL by double level run.

General site condition & access:

- Easily accessible area with good angle of sky visibility.
- Located near north east corner of Custom's building

Owner: Thilafushi Corporation Limited

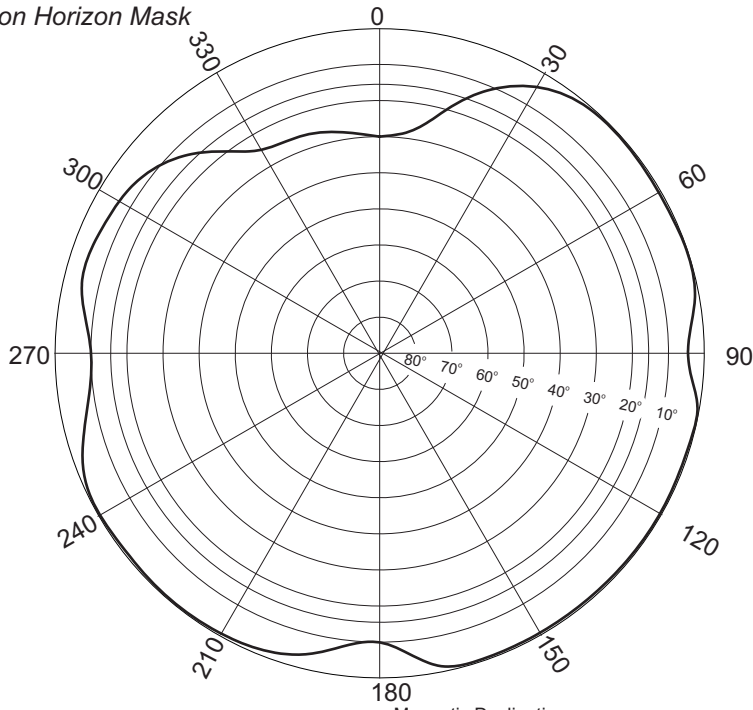
		
DOWN TOWARD PSM	NORTH VIEW	EAST VIEW
		
FROM PSM UPTOWARD SKY	SOUTH VIEW	WEST VIEW

SITE INFORMATION

Station Number

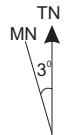
P	S	M	0	0	9	3
---	---	---	---	---	---	---

Station Horizon Mask

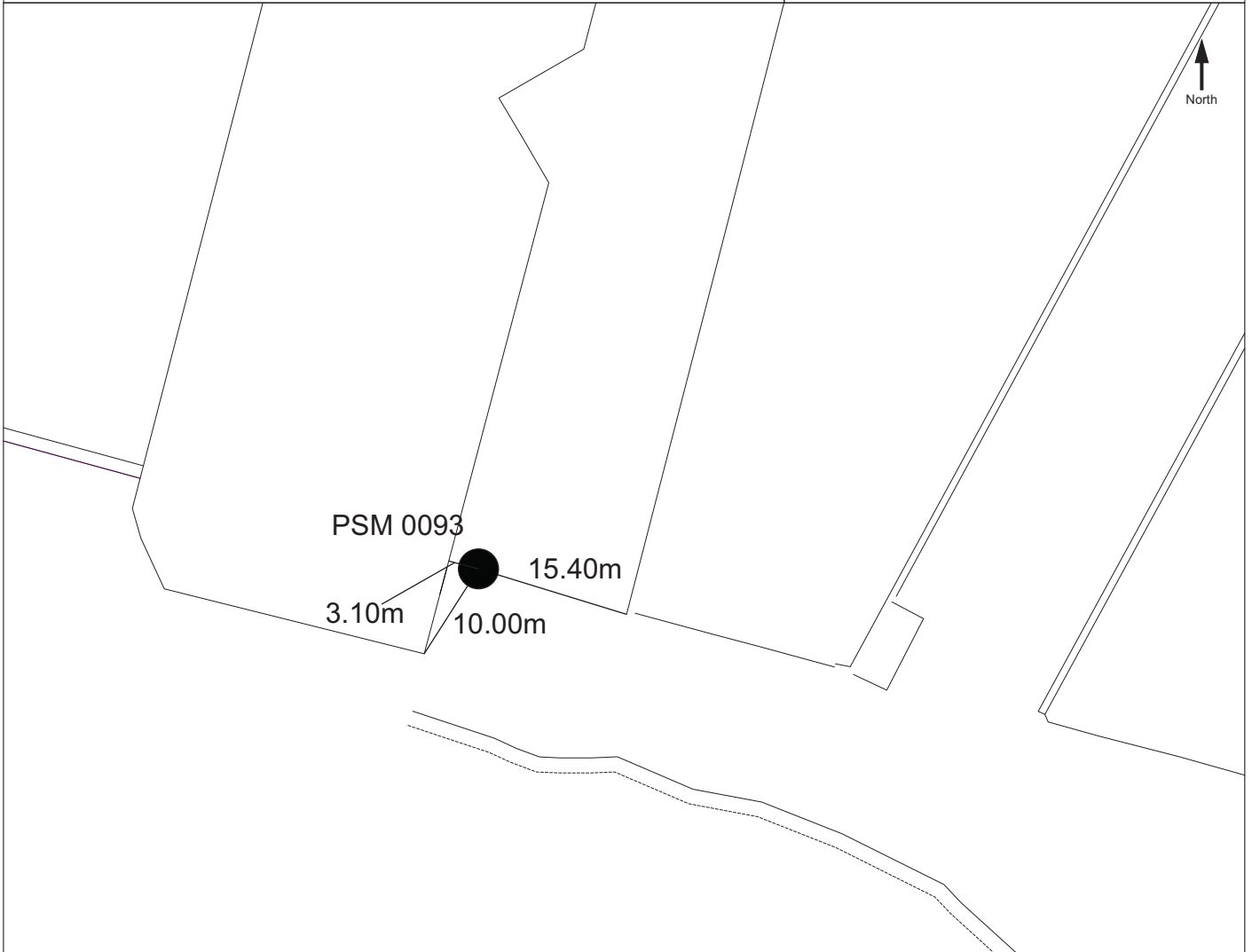


Height above Marker that horizon was mapped from 1.5 m

Magnetic Declination _____
 Declination applied to this figure?
 Yes No



Locality



Sketched by: MTCC Survey Team

Scale: Not to scale

Date: 01/October/2013

MALDIVES LAND AND SURVEY AUTHORITY

MINISTRY OF HOUSING AND INFRASTRUCTURE

Office (PABX): +(960) 3004300, Fax: +(960) 3004254

Ameenee Magu, Maafannu, Male', 20392, Maldives.

Email: survey@housing.gov.mv

Web: www.surveyofmaldives.gov.mv,



CONTROL POINT DETAILS	Station Number PSM 0094
Coordinate Information	
Geodetic	Grid
WGS 84	UTM Zone 43
Lat: 004° 10' 44.73379"	E: 327569.910
Long: 073° 26' 47.40156"	N: 462093.911
Ellp Height: -90.920	Orth Height: 0.902
Island Name: K. Thilafshi	Date: 01-October-2013

Monument description & method of survey:

- Type A Monument. Concrete casted insitu to a 1ft pvc pipe length 1m buried and 1.5m s/s rod driven to ground as the centre mark.
- Monument labelled with s/s plate stating the point ID.
- Horizontal coordinates fixed by GNSS Static Survey.
- Elevation reduced relative to Local MSL by GNSS RTK surveying.

General site condition & access:

- Easily accessible area with good angle of sky visibility.
- Located near Timber Store warehouse

Owner: Thilafushi Corporation Limited

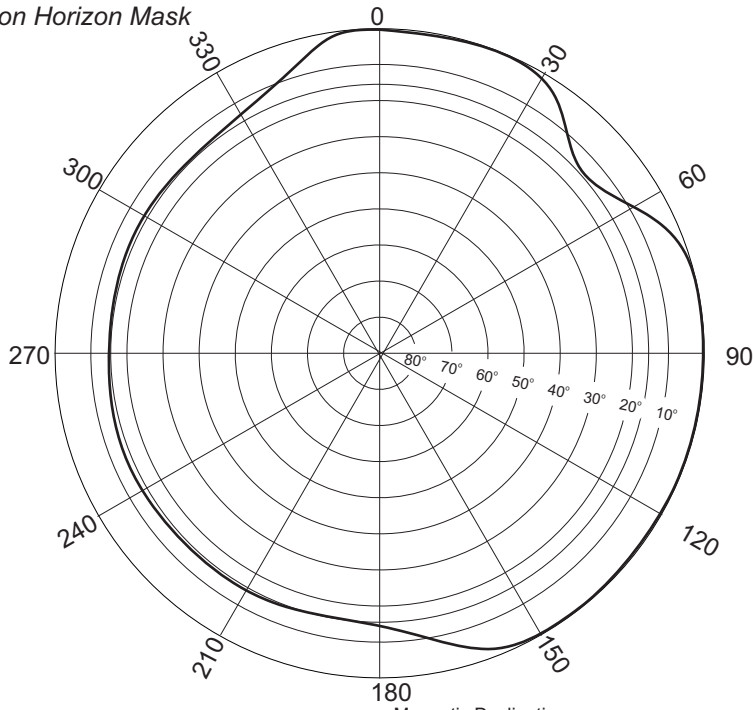


SITE INFORMATION

Station Number

PSM 0094

Station Horizon Mask

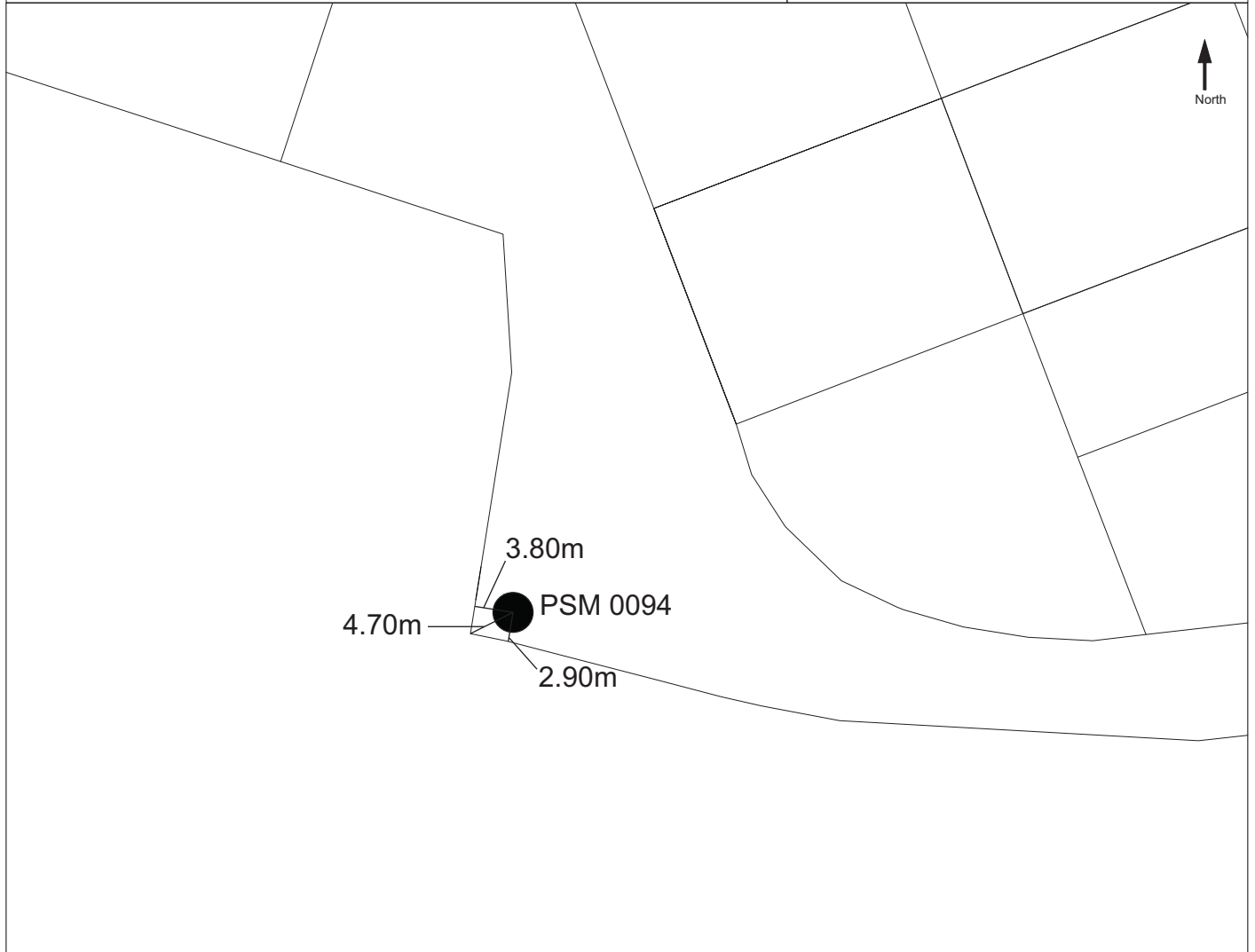


Locality



Height above Marker that horizon was mapped from 1.5 m

Magnetic Declination _____
Declination applied to this figure?
 Yes No



Sketched by: MTCC Survey Team

Scale: Not to scale

Date: 01/October/2013

MALDIVES LAND AND SURVEY AUTHORITY

MINISTRY OF HOUSING AND INFRASTRUCTURE

Office (PABX): +(960) 3004300, Fax: +(960) 3004254

Ameenee Magu, Maafannu, Male', 20392, Maldives.

Email: survey@housing.gov.mv

Web: www.surveyofmaldives.gov.mv,



CONTROL POINT DETAILS	Station Number PSM 0095
Coordinate Information	
Geodetic	Grid
WGS 84	UTM Zone 43
Lat: 004° 10' 57.10208"	E: 326321.544
Long: 073° 26' 06.89751"	N: 462476.291
Ellp Height: -90.389	Orth Height: 1.433
Island Name: K. Thilafshi	Date: 01-October-2013

Monument description & method of survey:

- Iron rod fixed in concrete.
- Monument labelled with s/s plate stating the point ID.
- Horizontal coordinates fixed by GNSS Static Survey.
- Elevation reduced relative to Local MSL by GNSS RTK surveying.

General site condition & access:

- Easily accessible area with wide angle of sky visibility.
- Located in Thilafushi TIZ

Owner: Thilafushi Corporation Limited

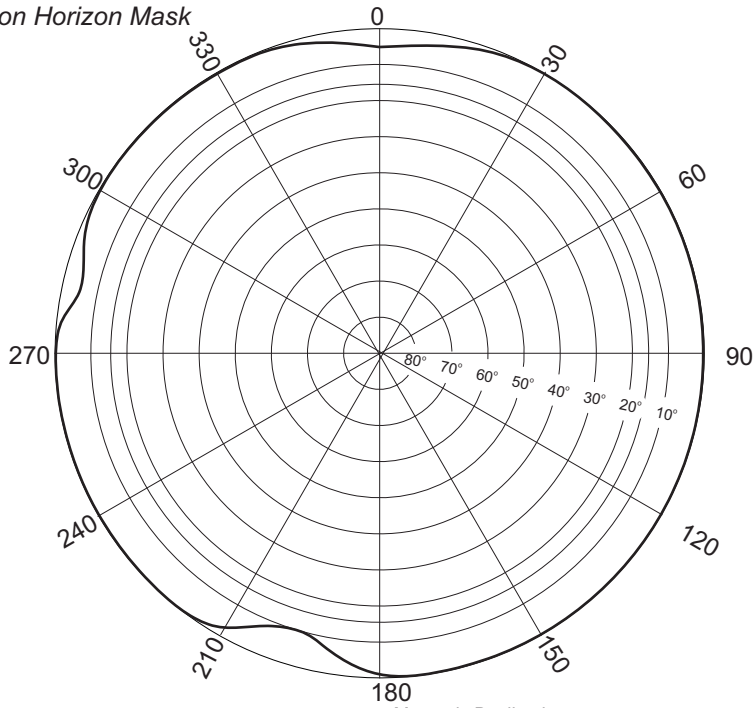
		
DOWN TOWARD PSM	NORTH VIEW	EAST VIEW
		
FROM PSM UPTOWARD SKY	SOUTH VIEW	WEST VIEW

SITE INFORMATION

Station Number

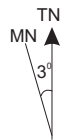
P	S	M	0	0	9	5
---	---	---	---	---	---	---

Station Horizon Mask

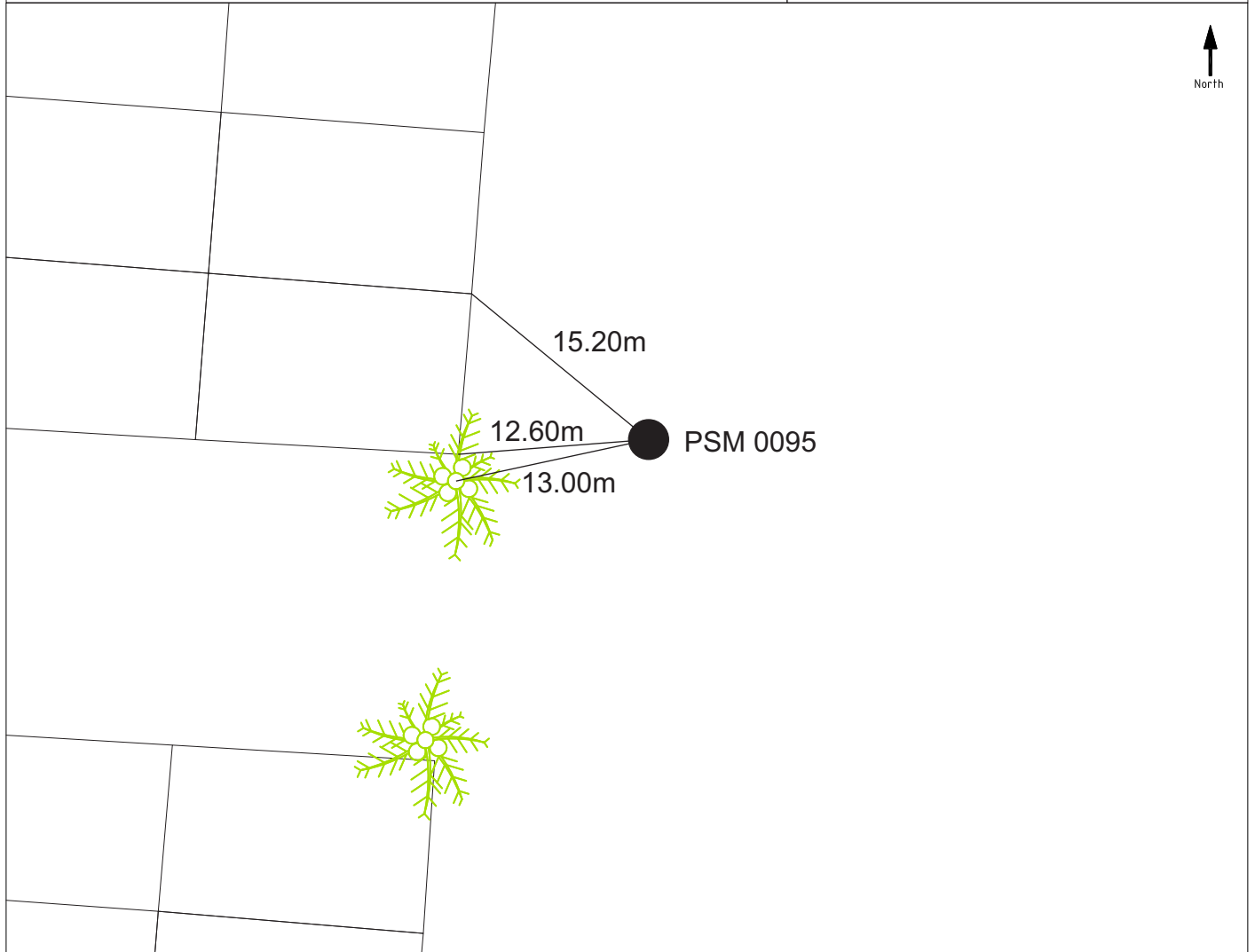
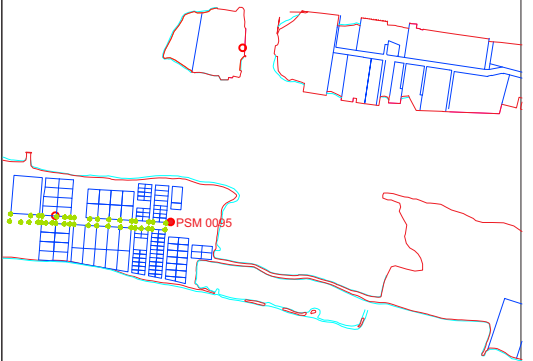


Height above Marker that horizon was mapped from 1.5 m

Magnetic Declination -----
Declination applied to this figure?
 Yes No



Locality



Sketched by: MTCC Survey Team

Scale: Not to scale

Date: 01/October/2013